



Recycling Guide for the  
Residents of Lebanon County

# Recycling *Roundup*

2023 - 2024

## GLRA Speaks for the Bees



*Just as Dr. Seuss' Lorax speaks for the trees, Greater Lebanon Refuse Authority speaks for the bees...We here at GLRA pride ourselves on our Wildlife Management Plan and our efforts to help the environment thrive! Part of our Wildlife Management Plan includes our on-site honey bee boxes that were brought in last year by a local beekeeper. Since the arrival of the bee boxes, we have constructed a Pollinator Garden of Tribute at our new Electronics Recycling Facility. This garden was specifically designed for bees by planting various plants and flowers that attract local pollinators.*

For those that don't know, honey bees will travel up to 5 miles away from their hive to find food if necessary. However, they typically forage for food within a 2-mile radius, making this garden the perfect addition to our site. And lucky for the bees, our pollinator garden is in full bloom this year!

We have 8 total bee hives on site at GLRA, all of which get regular maintenance from their beekeeper. During the latest hive maintenance, their beekeeper harvested about 30 pounds of honey and that was from just one hive! In order to take the honey-filled combs home, he must replace the fully capped honey columns with new, empty columns. This allows the bees to restart their honeycomb process over again.

Our current hives have about 4 levels, and each level consists of around 10 columns. The top 2 layers tend to be where only honey is stored, while the lower 2 levels are where the Queen grows her "brood." The Queen's brood are the cells where she grows her eggs. Those egg cells are then surrounded by honey cells, which provides the new bees their first meals. However, this Queen's brood has grown so large that their beekeeper expects to add another level to that specific hive in the coming months to accommodate all the newly born bees! Currently, EACH HIVE on site holds about 50,000 BEES, so additional room is definitely needed for their ever-expanding colony! In the words of the most famous quote in Dr. Seuss' *The Lorax*...*Unless someone like you cares a whole awful lot, nothing is going to get better. It's not.*



[www.goglra.org](http://www.goglra.org)

Printed on Recycled Paper with Vegetable-Based Ink



# Lebanon County's Home Collection of Household Hazardous Waste

1-800-742-5542 Ext 123 or [www.mxiinc.com/lebanon](http://www.mxiinc.com/lebanon)



Lebanon County Residents are you looking for information on how to properly dispose of old lawn and garden chemicals, automotive fluids, paints, pesticides and poisons? These are items that you cannot put out with the regular trash, pour down a drain, or dump into the ground in the backyard. GLRA sponsors an at home collection of Household Hazardous Waste for Lebanon County residents for **ONLY a \$15 Co-Pay!**

The quantity of material that can be collected per pick-up is limited to the items that can be safely placed inside the kit/bag. The only exception to any materials being placed outside the kit/bag are fluorescent tubes/bulbs (limit of 5) and an automotive battery (limit of 1).

To schedule an at home collection of household hazardous waste, call Lebanon County's Household Hazardous Waste Hotline at **1-800-742-5542 Extension 123** or visit [www.mxiinc.com/lebanon](http://www.mxiinc.com/lebanon).

**DUE TO FUNDING, THERE IS A LIMIT OF ONE PICK-UP PER HOUSEHOLD PER YEAR.**

## ACCEPTABLE HHW MATERIALS

Adhesives • Aerosols • Art/Hobby Supplies • Automotive Fluids • Auto Batteries  
Household Batteries • Cleaners • Waxes • Flammables • Lubricants • Poisons  
Lawn/Garden Chemicals • Paint • Thinners • Stains • Varnishes • Gasoline  
Mercury Thermometers • Mercury Thermostats • Fluorescent Tubes • Kerosene  
Compact Fluorescent Bulbs • Rubbing Alcohol • Degreaser • Spot Remover  
Nail Polish • Nail Polish Remover

## UNACCEPTABLE HHW MATERIALS

Biohazardous Waste • Needles • Pharmaceutical Waste • Municipal Solid Waste  
Ammunition • Explosives • Fire Extinguishers • Gas Cylinders • Radioactive Waste  
Smoke Detectors • TVs • Refrigerator • Freezer • Water Heater • Stove • Washer  
Dryer • Air Conditioner • Dehumidifier • Scrap Metal • Electronics • Microwave  
Containers Larger than 5 Gallons • Unidentified Materials • Unmarked Containers





# The Perfect Recipe to Recycle Right!

The most common misunderstanding the public has about **CURBSIDE** recycling is that you need to put as much as possible into your recycle bin. However, recycling is actually a system of collecting and processing used materials that still have value. This means **NOT** everything is recyclable. There must be someone to buy the used material and recycle it into a new product. Just because it has a recycling symbol on the bottom, **DOES NOT** mean it is recyclable. While most of us are well-intentioned, when we put materials that don't belong into the bin, we are actually contaminating the recycling stream. When you don't recycle right, this negatively impacts our environment and economy.

Below are the perfect **INGREDIENTS** to put inside your curbside recycle bin to **RECYCLE RIGHT!**

- Metal Food and Beverage Cans (Aluminum and Steel)
- Plastic Bottles and Jugs **ONLY** (Check For The Neck)
- Newspaper (Clean and Dry)
- Glass Bottles and Jars (Clear, Green, Brown)
- Corrugated Cardboard (Clean, Dry, Must Be Flat, No Food Contact)

**REMEMBER, ONLY** put these **INGREDIENTS** in your curbside recycle bin. Everything else should be put in the trash. If you aren't sure, just remember the simple phrase...**"WHEN IN DOUBT, THROW IT OUT!"**

## FOR ALL CURBSIDE RECYCLING



## WHEN IN DOUBT → THROW IT OUT

- |                        |                          |                         |
|------------------------|--------------------------|-------------------------|
| <b>NO</b> Plastic Bags | <b>NO</b> Shredded Paper | <b>NO</b> Medical Waste |
| <b>NO</b> Food/Liquid  | <b>NO</b> Clothing       | <b>NO</b> Scrap Metal   |
| <b>NO</b> Garden Hoses | <b>NO</b> Diapers        | <b>NO</b> Styrofoam     |

**FOR ALL PLASTICS CHECK FOR THE NECK!  
RECYCLE ALL PLASTIC BOTTLES, JUGS, & JARS  
WITH AN OPENING SMALLER THAN THE BASE.**



# Curbside Programs

**Annvile Township:** Annville Township contracts its waste and recycling services to GFL Environmental. Recycle bins are available at the Township Office at no charge. Acceptable items include: clear, green, and brown glass bottles and jars, metal food and beverage cans, plastic bottles and jugs ONLY, corrugated cardboard, and newspaper. Contact the Township Office at 717-867-4476 with questions or to report missed collections.

**Cleona Borough:** Residents of Cleona are asked to contact one of the licensed haulers to arrange for waste and recycling services. Acceptable items include: clear, green, and brown glass bottles and jars, metal food and beverage cans, plastic bottles and jugs ONLY, corrugated cardboard, and newspaper. Contact your waste hauler with questions you might have regarding waste or recycling. Contact the Borough Office at 717-272-7167 with any other questions.

**Cornwall Borough:** Residents of Cornwall are asked to contract recycling services through one of the licensed haulers. Recycle bins are available at the Borough Office at no charge. Acceptable items include: clear, green, and brown glass bottles and jars, metal food and beverage cans, plastic bottles and jugs ONLY, corrugated cardboard, and newspaper. Contact the Borough Office at 717-274-3436 with questions.

**Jackson Township:** Residents of Jackson Township must contract recycling services through one of the licensed haulers. Recycle bins are available at the Township Office at no charge. Acceptable items include: clear, green, and brown glass bottles and jars, metal food and beverage cans, plastic bottles and jugs ONLY, corrugated cardboard, and newspaper. Contact the Township Office at 717-866-4771 with questions.

**Jonestown Borough:** Residents of Jonestown Borough must contract recycling services through one of the licensed haulers. The Borough provides recycle bins to residents at no charge. Acceptable items include: clear, green, and brown glass bottles and jars, metal food and beverage cans, plastic bottles and jugs ONLY, corrugated cardboard, and newspaper. Contact the Borough Office at 717-861-5414 with questions.

**Lebanon City:** Residents of the City must contact one of the licensed haulers for waste and recycling services. The City provides recycle bins to residents at no charge. Acceptable items include: clear, green, and brown glass bottles and jars, metal food and beverage cans, plastic bottles and jugs ONLY, corrugated cardboard, and newspaper. For more



information on Lebanon City's recycling programs, visit [www.lebanonpa.org](http://www.lebanonpa.org) or call Lebanon City Department of Public Works at 717-639-2800 Option 4.

**Mount Gretna Borough:** Mount Gretna Borough contracts its waste and recycling services to TNT Sanitation Service, Inc. Recycle bins are available at the Borough Office at no charge. Acceptable items include: clear, green, and brown glass bottles and jars, metal food and beverage cans, plastic bottles and jugs ONLY, corrugated cardboard, and newspaper. Contact the Borough Office at 717-964-3270 with questions.

**Myerstown Borough:** Residents of Myerstown must contract waste and recycling services through one of the licensed haulers. Recycle bins are available at the Borough Office at no charge. Acceptable items include: clear, green, and brown glass bottles and jars, metal food and beverage cans, plastic bottles and jugs ONLY, corrugated cardboard, and newspaper. Contact the Borough Office at 717-866-5038 with questions.

**North Cornwall Township:** Residents of North Cornwall Township must contract waste and recycling services through one of the licensed haulers. Recycle bins are available at the Township Office at no charge. Acceptable items include: clear, green, and brown glass bottles and jars, metal food and beverage cans, plastic bottles and jugs ONLY, corrugated cardboard, and newspaper. Contact Jean Long at the Township Office at 717-273-9200 with any questions.

**North Lebanon Township:** Residents of North Lebanon Township must contract directly with one of the licensed haulers for waste and mandated recycling services. Recycle bins are available at the Township Office at no charge. Acceptable items include: clear, green, and brown glass bottles and jars, metal food and beverage cans, plastic bottles and jugs ONLY, corrugated cardboard, and newspaper. Contact Bonnie Grumbine at 717-273-7132 with any recycling questions or concerns.



**North Londonderry Township:** Township residents may select any licensed hauler for waste and recycling services. Acceptable items include: clear, green, and brown glass bottles and jars, metal food and beverage cans, plastic bottles and jugs ONLY, corrugated cardboard, and newspaper. Please contact the Township Office at 717-838-1373 with any questions.

**Palmyra Borough:** The Borough contracts weekly waste and recycling collection services to Waste Management Inc. Blue 25-gallon recycle bin may be purchased for \$18 at the Borough Office. Acceptable items include: clear, green, and brown glass bottles and jars, metal food and beverage cans, plastic bottles and jugs ONLY, corrugated cardboard, and newspaper. Please contact the Borough Office at 717-838-6361 with questions.

**Richland Borough:** The Borough contracts waste and recycling services to Eagle Disposal of PA, Inc. Acceptable items include: clear, green, blue, and brown glass bottles and jars, metal food and beverage cans, plastic bottles and jugs ONLY, corrugated cardboard, and newspaper. Contact the Borough Office at 717-866-5601 with any questions.

**South Annville Township:** Township residents may select any licensed hauler for waste disposal and recycling services. Acceptable items include: clear, green, and brown glass bottles and jars, metal food and beverage cans, plastic bottles and jugs ONLY, corrugated cardboard, and newspaper. Please contact the Township Office at 717-867-2846 with questions.

**South Lebanon Township:** Township residents must contract waste and recycling services with a licensed hauler. Free recycle bins are available at the Township Building. Acceptable items include: clear, green, and brown glass bottles and jars, metal food and beverage cans, plastic bottles and jugs ONLY, corrugated cardboard, and newspaper. Contact Mary Rivers at 717-274-0481 with any questions.

**South Londonderry Township:** Township residents must contract waste and recycling services through a licensed hauler. Free recycle bins are available at the Township Office. Acceptable items include: clear, green, and brown glass bottles and jars, metal food and beverage cans, plastic bottles and jugs ONLY, corrugated cardboard, and newspaper. Contact the Township at 717-838-5556 or visit [www.southlondonderry.org](http://www.southlondonderry.org) with any questions.

**West Cornwall Township:** Residents of West Cornwall Township may select one of the licensed haulers for waste and recycling services. Acceptable items include: clear, green, and brown glass bottles and jars, metal food and beverage cans, plastic bottles and jugs ONLY, corrugated cardboard, and newspaper. Call the Township at 717-272-9841 with any questions.

**West Lebanon Township:** West Lebanon Township contracts waste and recycling services to TNT Sanitation, Inc. Recycle bins are available at the Township at no cost. Acceptable items include: clear, green, and brown glass bottles and jars, metal food and beverage cans, plastic bottles and jugs ONLY, corrugated cardboard, and newspaper. Contact the Township Office at 717-274-1598 with any questions.



Looking for a Waste Hauler for your Trash and Recycling Needs?

For a complete up-to-date list of licensed residential waste haulers who service Lebanon County, please visit our website at [www.goglra.org](http://www.goglra.org) and click on the Waste Hauler Directory graphic button on our homepage shown below.



Waste Hauler Directory





# Recycling Drop-Off Locations



<b>Annville Township Residential Drop-Off</b>	Public Works Dept. 675 West Main Street Annville Phone: 717-867-4476	Township Residents <u>ONLY</u> March through October Wed 12 PM - 6 PM Sat 6 AM - 12 PM	Corrugated Cardboard Metals Recycling (No Freon Appliances) Green Waste Recycling
<b>Battery Warehouse</b>	125 Schneider Drive Lebanon Phone: 717-273-8884	Mon through Fri 8 AM - 5 PM Sat 8 AM - 12 PM	Automotive • Motorcycle • Marine • RV Golf Cart • Lawn/Garden • Floor Scrubber Steel Case Industrial • Sealed Lead Acid <b>NO LITHIUM • NO OTHER Batteries Accepted</b>
<b>CSR-Brandywine</b>	328 North 14th Street Lebanon Phone: 717-272-4655	Mon through Fri 8 AM - 3 PM Sat 8 AM - 12 PM	Aluminum Cans • Ferrous Metals Non-Ferrous Metals • All Appliances Fee is \$15 Per Freon Appliance <b>Corrugated Cardboard • Newspaper Office Paper • Plastics Commercial Businesses/Industries ONLY</b>
<b>Greater Lebanon Refuse Authority County Recycling Drop-Off Center</b>	1610 Russell Road Lebanon Phone: 717-867-5790 Ext 307	Mon through Fri 7 AM - 3:50 PM Sat 8 AM - 11:45 PM	Aluminum Cans • Steel Cans • Clear, Green and Brown Glass • Newspaper Magazines • Mixed Office Paper • Phone Books • #1 PET Plastic Bottles • #2 HDPE Plastic Bottles • Corrugated Cardboard Clear #1 PET Thermoform Plastic ONLY <b>Tires • All Appliances - Freon Included ■</b>
<b>Heidelberg Township Municipal Building</b>	111 Mill Road Schaefferstown Phone: 717-949-3885	7 days a week From dawn to dusk	Corrugated Cardboard <u>ONLY</u> <u>MUST BE FLAT</u>
<b>Lebanon City Recycling Drop-Off Center</b>	14th & Lehman Streets Lebanon Phone: 717-639-2800 Option 4	City Residents <u>ONLY</u> Wed 8 AM - 3 PM Thur & Fri 12 PM - 5 PM Sat 8 AM - 3 PM	Aluminum Cans • Steel Cans • Clear, Green and Brown Glass • Newspaper • Magazines Mixed Office Paper • Corrugated Cardboard Phone Books • #1 PET Plastic Bottles #2 HDPE Plastic Bottles
<b>North Cornwall Township Recycling Drop-Off Center</b>	320 South 18th Street Lebanon Phone: 717-273-9200	<u>Spring/Summer</u> Mon through Sat 7 AM - 7 PM Sun 10 AM - 7 PM <u>Fall/Winter</u> Mon through Sat 7 AM - 5 PM Sun 10 AM - 5 PM	Corrugated Cardboard • Newspaper Mixed Paper (office paper, junk mail, magazines, phone books)
<b>North Lebanon Township Municipal Building</b>	725 Kimmerlings Road Lebanon Phone: 717-273-7132	7 days a week From dawn to dusk	Newspaper • Corrugated Cardboard Office Paper • Magazines • Catalogs Glossy Paper
<b>North Londonderry Township Municipal Building</b>	655 East Ridge Road Palmyra Phone: 717-838-1373	7 days a week From dawn to dusk	Newspaper • Corrugated Cardboard Mixed Paper (office paper, junk mail, paperboard)
<b>Palmyra Borough Public Works Facility</b>	910 East Broad Street Palmyra Phone: 717-838-6361	Borough Residents <u>ONLY</u> 7 days a week 24 hours a day	Corrugated Cardboard <u>ONLY</u> <u>MUST BE FLAT</u> Magazines Dumpsters are Located Outside the Gate
<b>South Lebanon Township Recycling Drop-Off Center</b>	3 Linden Road Lebanon Phone: 717-274-0481	7 days a week April to September 7 AM - 7 PM October to March 7 AM - 5 PM	Aluminum Cans • Steel Cans <u>NO SCRAP</u> Mixed Paper (includes office paper, magazines, junk mail, paperboard, and shredded office paper--- <u>NO BAGS</u> ) Corrugated Cardboard <u>MUST BE FLAT</u>
<b>Union Township Recycling Drop-Off Center Lickdale</b>	Union Township Building 3111 State Route 72 Jonestown Phone: 717-865-4039	Township Residents <u>ONLY</u> Mon through Fri 6:30 AM - 6:00 PM Sat 8 AM - 4 PM	Aluminum Cans • Steel Cans • Clear, Green and Brown Glass • Newspaper • Magazines Corrugated Cardboard • Mixed Office Paper #1 through #7 Plastic Bottles ONLY Scrap Metal • Green Waste Recycling





A Composting Guide for  
Lebanon County Residents

**2023-2024**

# The Scoop



Leaf and yard waste is something every homeowner eventually needs to dispose of. Did you know that if you live in a community that is mandated to recycle, that it is illegal to throw leaf and yard waste out with the trash? A waste hauler is not allowed to collect any leaf or yard waste with the trash in a mandated community. By throwing it away with the normal trash, we are sending it to a landfill where it is using up unnecessary landfill space meant for trash that cannot be recycled. Leaf and yard waste can be recycled into compost which can be used over and over again as food for the earth. Leaves, branches and garden wastes can be composted into a rich soil additive called humus which naturally fertilizes the soil.

This newsletter is intended to provide you with helpful information when you are raking those leaves and cleaning up the yard. Inside, you will find information on municipal leaf and yard waste collection programs that exist in Lebanon County. If your Township or Borough is not listed in this newsletter, then it does not have a program for leaf or yard waste. If your municipality does not have a program, we have provided information in the box to your right on how to dispose of your leaf and yard waste.

## **Annville Township**

### **Leaf Collection and Yard Waste Drop-Off**

Annville Township provides a curbside leaf collection program for its residents weekly from October to early December. Leaves must be placed loose along the curb and will NOT be picked up if placed in bags. From early March through October a dumpster for yard waste is available at the Public Works Department at 675 West Main Street, Annville. The dumpster is for ANNVILLE TOWNSHIP RESIDENTS ONLY. Hours to drop off yard waste are Wednesdays 12:00 p.m. to 6:00 p.m. and Saturdays 6:00 a.m. to 12:00 p.m. Contact the Township Office at 717-867-4476 with any questions.

## **Cleona Borough**

### **Leaf Collection**

Cleona Borough arranges for leaf collection for its residents. For details on leaf collection, residents are asked to check the website [www.cleonaborough.org](http://www.cleonaborough.org) or contact the

## **No Program? No Problem!**

### **Leaf and Yard Waste Disposal at GLRA**

Any resident or business of Lebanon County may dispose of leaf and yard waste at GLRA's Compost Facility located at 1610 Russell Road, Lebanon. The cost to dispose of leaf and yard waste is **\$18** for up to **1000 pounds** or **\$36/ton**. A GLRA license is required. A tarp is required.

### **GLRA Business Hours to Drop Off**

<b>Monday - Friday</b>	<b>7:00 AM - 3:50 PM</b>
<b>Saturday</b>	<b>8:00 AM - 11:45 AM</b>

GLRA **ONLY** accepts the following materials:

**Leaves**  
**Shrubbery**  
**Branches**  
**Grass Clippings**  
**Tree Trimmings**  
**Garden Residue**  
**Tree Limbs Under 4 Inches in Diameter**

Borough Office by phone at 717-272-7167. For a \$30 annual fee, residents may drop yard waste at North Cornwall Township's Yard Waste Drop-Off Facility after obtaining an address verification form from the Cleona Borough Office.

## **Cornwall Borough**

### **Leaf Collection**

Cornwall Borough provides curbside leaf collection for its residents beginning in October and ending in December. The Borough Highway Department will pick up leaves in all areas except ones zoned Residential Forest. Residents can obtain the leaf collection schedule online at [www.cornwall-pa.com](http://www.cornwall-pa.com). The Borough also offers a Christmas tree drop-off in a designated area at the Highway Garage from January 1 to mid February. Trees ten feet or more must be cut in half and be cleaned of ALL decorations! Christmas tree bags WILL NOT be accepted. Contact the Borough Office at 717-274-3436 with questions.



## Jackson Township

### Leaf and Yard Waste Collection

Jackson Township provides a leaf collection program in the Fall from the mid October to early December. Yard waste (branches, brush, sticks and twigs) is collected one day in April and one day in October. A detailed postcard, Jackson Township Recycling News, is available at the Township Office and on the homepage of the Township's website [www.jacksonstownship-pa.gov](http://www.jacksonstownship-pa.gov). Contact the Jackson Township Office at 717-866-4771 with any questions.

## Jonestown Borough

### Yard Waste Compost Facility

Jonestown Borough operates a municipal yard waste compost facility for Borough residents AND businesses and a limited number of Swatara and Union Township RESIDENTS ONLY. There is a \$35 annual fee for Jonestown Borough residents and businesses and a \$50 annual fee for Swatara and Union Township RESIDENTS ONLY, renewable every January 1, for key card to access the facility. An additional \$5 fee is required for the key card at its initial issuance. To replace a lost key card, the cost is \$5. The key card allows unlimited access to the facility from dusk to dawn. Contact the Borough Office at 717-861-5414 with questions.

## Jonestown Borough

### Christmas Tree Collection

Christmas trees are collected after the holidays. A newsletter is distributed to Borough residents with Christmas tree collection information. Please contact the Borough Office at 717-861-5414 with any questions.

## Lebanon City

### Leaf and Yard Waste Collection

Lebanon City provides an eight week Fall curbside leaf collection program annually for its residents and also provides a green waste collection program two times per year in the Spring and in the Fall. Prior to all collection events, Lebanon City will post all published announcements, collection schedules, and collection guidelines on the City's website [www.lebanonpa.org](http://www.lebanonpa.org). For additional questions, please contact Lebanon City Department of Public Works at 717-639-2800 Option 4.

## Lebanon City

### Yard Waste Compost Facility

Lebanon City operates a municipal yard waste compost facility for City residents and businesses ONLY. There is a \$35 annual fee for residents and a \$500 annual fee for businesses for a key card to access the facility. The key card allows a resident unlimited access to the facility within the scheduled hours. Spring/Summer Hours are Monday through Saturday 7:00 a.m. to 7:00 p.m. Fall/Winter Hours are Monday through Saturday 8:00 a.m. to 5:00 p.m.



For a key card application and a list of rules and regulations for the facility, contact the Lebanon City Department of Public Works at 717-639-2800 Option 4.

## Mount Gretna Borough

### Leaf and Yard Waste Collection

Mount Gretna Borough has a seasonal leaf and yard waste collection program. Leaves and brush are collected two times a year---in the Spring and in the Fall. The Borough sends a letter to all its residents providing details for the seasonal collection. Visit [www.mtgretna.com/Borough/](http://www.mtgretna.com/Borough/) online to access the leaf and brush collection schedule. Contact the Borough Office at 717-964-3270 with questions.

## Myerstown Borough

### Leaf, Yard Waste and Christmas Tree Collection

Myerstown Borough provides curbside leaf collection for its residents on a weekly basis from October to December. All leaves MUST be placed at the CURB in CLEAR PLASTIC BAGS and WILL NOT be collected unless placed in clear plastic bags! Christmas Trees are collected curbside after the holidays through mid January of each year. All Christmas Trees MUST be placed CURBSIDE and WILL NOT be collected at the rear of any properties. The Borough also provides a Spring curbside yard waste collection from mid April until mid May. Acceptable yard waste consists of leaves and small sticks. Spring yard waste MUST be placed at the CURB in CLEAR PLASTIC BAGS and WILL NOT be collected unless placed in clear plastic bags! All items listed above MUST be placed at the CURB for pick up NO LATER than 7:00 a.m. on collection day. The Borough also collects larger branches and tree limbs WITHIN CERTAIN SIZE LIMITATIONS upon request from residents and AFTER inspection by a Borough Public Works Department employee. To make arrangements for this service, residents MUST contact the Public Works Department at 717-866-6948 and leave a message with name, address, phone number, and best time to contact. Clear plastic bags are available at the Borough Office for \$0.25 per bag. Public notices for all of the above programs are published in local newspapers. Contact the Borough Office at 717-866-5038 with questions.

## North Cornwall Township

### Leaf and Yard Waste Collection

North Cornwall Township provides a leaf collection program from the end of October to early December. Yard waste (which includes garden waste, shrubbery clippings, tree trimmings and woody yard waste) is collected two times a year during the beginning of April and October. Detailed handouts are available at North Cornwall Township's Office and on its website [www.nctown.org](http://www.nctown.org). Contact the Township Office at 717-273-9200 with any questions.



### North Cornwall Township Yard Waste Drop-Off Facility

North Cornwall Township operates a municipal yard waste drop-off facility for North Cornwall Township and Cleona Borough residents ONLY. Residents of Cleona Borough must first complete a residency verification form with the Cleona Borough Office. There is a \$30 annual fee, renewable every January 1, for a key card to access the facility. A \$5 deposit is required on the key card at its initial issuance. A key card allows unlimited access to the facility within the scheduled hours. Spring/Summer hours are Monday through Saturday 7:00 a.m. to 7:00 p.m. and Sunday 10:00 a.m. to 7:00 p.m. Fall/Winter hours are Monday through Saturday 7:00 a.m. to 5:00 p.m. and Sunday 10:00 a.m. to 5:00 p.m. All loads must be tarped. Small quantities can be dropped off using Pay As You Go. Residents may bring in yard waste in bags or containers (35 gallons or less) and pay \$4 each. Hours for Pay As You Go are ONLY during Township business hours. NO CASH ACCEPTED OVER \$10! Must pay with check or money order over \$10. For an application and a list of rules for the facility, contact the Township Office at 717-273-9200.

### North Lebanon Township Leaf and Yard Waste Collection

North Lebanon Township collects leaves curbside from mid October to December. Yard waste is also collected a day in April and a day in October. North Lebanon Township will publish dates, times and collection instructions in the Township's quarterly newsletter and also on its website. For additional information, contact the Township Office at 717-273-7132 or visit [www.northlebanontwppa.gov](http://www.northlebanontwppa.gov).

### North Lebanon Township Yard Waste Compost Facility

North Lebanon Township operates a municipal yard waste compost facility for Township residents ONLY. There is an annual fee, determined by the Board of Supervisors, renewable every January 1, for key card to access the facility. The fee for 2023 is \$50, allowing unlimited access to the facility and mulch within the scheduled hours. Spring/Summer hours are Monday through Saturday 7:00 a.m. to 8:00 p.m. Fall/Winter hours are Monday through Saturday 7:00 a.m. to 5:00 p.m. Loading and delivery services are available for a fee. All incoming and outgoing loads must be tarped. For a key card application and a list of rules/regulations for the facility, contact the Township Office at 717-273-7132 or visit the Township online at [www.northlebanontwppa.gov](http://www.northlebanontwppa.gov).



### North Londonderry Township Leaf Collection and Curbside Chipping

North Londonderry Township provides weekly curbside leaf collection to residents on most public roads in the Spring and Fall. Spring collection runs from the end of March to the beginning of April. Fall leaf collection occurs from mid October through the first week of December. North Londonderry Township also provides a monthly yard waste chipping program for its residents. On the 1st Monday of each month (except November and December) brush and branches are collected and chipped curbside on most public roads in the Township. The Township also provides an additional collection of Christmas trees in January. Residents can access the municipal newsletter at [www.nlondtwp.com](http://www.nlondtwp.com) for information regarding the collection schedule and procedures. Contact the Township Office at 717-838-1373 with any questions.

### North Londonderry Township Yard Waste Compost Facility

North Londonderry Township operates a municipal yard waste compost facility for North Londonderry Township residents ONLY (commercial businesses and non-residents are prohibited). North Londonderry Township charges an annual fee for residents to use the drop-off center. Hours of access to the facility are: April through October, Monday through Saturday 7:00 a.m. to 8:00 p.m. and Sunday 12:00 p.m. to 8:00 p.m.; November through March, Monday through Saturday 7:00 a.m. to 5:00 p.m. and Sunday 12:00 p.m. to 5:00 p.m. Residents are required to visit the North Londonderry Township Office to purchase or renew an access card. Contact the Township Office at 717-838-1373 with questions or visit [www.nlondtwp.com](http://www.nlondtwp.com) for additional information on North Londonderry Township's residential yard waste facility.

### Palmyra Borough Leaf and Yard Waste Collection

Curbside leaf and yard waste collection is provided to all residents. Yard waste is collected by the Borough's contracted hauler, Waste Management Inc., during 18 specially scheduled weeks between March and December. Yellow 25-gallon yard waste containers may be purchased for \$18 at the Borough Office. Christmas trees are also collected by Waste Management Inc. during two specially scheduled collection weeks in January. Wood waste (branches larger than 1-inch in diameter) are chipped curbside by the Borough Public Works Crew the last full week of each month from April through November. Leaves are also collected by the Palmyra Borough Public Works Crew. Spring leaf collection is offered for one week in March and one week in April. Fall leaf collection is conducted weekly from mid-October to mid-December.



Collection schedule information is available online at [www.palmyraborough.org](http://www.palmyraborough.org) and also in the Borough newsletter mailed with the quarterly sewer and refuse bills. Contact the Borough Office at 717-838-6361 with any questions.

## Richland Borough Leaf Collection

Richland Borough provides a curbside leaf collection program for Richland Borough residents each year. Near the end of October, the Borough will begin collecting leaves twice a week and will end the collection around the third week of November. Contact the Richland Borough Office at 717-866-5601 with any questions.

## South Annville Township Leaf Collection and Yard Waste Drop-Off

For a fee, South Annville residents may dispose of yard waste at the Annville Township Public Works Department located at 675 West Main Street, Annville. Each year from March through October, the hours to drop off yard waste are Wednesdays 12:00 p.m. to 6:00 p.m. and Saturdays 6:00 a.m. to 12:00 p.m. To use Annville's drop-off facilities, South Annville residents must first purchase a drop-off permit. Permits may be purchased at the Annville Township Office, 36 North Lancaster Street, Annville. Contact the South Annville Township Office at 717-867-2846 with any questions.

## South Lebanon Township Leaf and Yard Waste Collection

Leaf and yard waste are collected curbside from South Lebanon Township residents twice a year. One combined leaf and yard waste collection is conducted in April. Fall leaf collection runs from mid October to the end of November with no set days for any area. Yard waste is collected curbside once in the Fall prior to leaf collection. All collection dates will be published in the Township's newsletter and on its website [www.twp.south-lebanon.pa.us](http://www.twp.south-lebanon.pa.us). For additional questions, contact the Township Office at 717-274-0481.

## South Lebanon Township Yard Waste Compost Facility

South Lebanon Township operates a municipal yard waste compost facility. Access cards to the facility are available for a \$40 annual fee for South Lebanon Township residents and a \$50 annual fee for Cornwall Borough, Heidelberg Township, and West Cornwall Township residents---renewable every January 1. The access card allows unlimited access to the facility within the scheduled hours (7 days a week): April to September 7:00 a.m. to 7:00 p.m. and October to March 7:00 a.m. to 5:00 p.m. All loads must be

tarped. For an application and list of rules and regulations for the facility, contact the South Lebanon Township Office at 717-274-0481 or visit the website at [www.twp.south-lebanon.pa.us](http://www.twp.south-lebanon.pa.us).

## West Cornwall Township Leaf Collection

West Cornwall Township provides a leaf collection program for approximately six weeks in the Fall and for two weeks in early Spring. Leaf collection notices are on the Township's website, [www.westcornwalltwp.com](http://www.westcornwalltwp.com). For more information, please contact the West Cornwall Township Office at 717-272-9841.

## West Lebanon Township Yard Waste Compost Facility

West Lebanon Township operates a municipal yard waste compost facility for West Lebanon Township residents and businesses ONLY. There is a \$30 annual fee for residents and a \$300 annual fee for businesses for a key card to access the facility. The key card allows Township residents and businesses unlimited access to the yard waste compost facility within the scheduled hours. Hours of operation for the yard waste compost facility are Monday through Sunday from 7:00 a.m. to 9:00 p.m. All incoming loads must be tarped. For a key card application and a list of rules and regulations for the facility, contact the West Lebanon Township Office at 717-274-1598. Office hours are Monday through Thursday from 9:00 a.m. to 1:00 p.m.

## 2023-2024 Plant Bedding ONLY



Wood Mulch NOT Available

## Daily Loading Schedule

<b>MONDAYS</b>	8:00 am to 11:00 am
<b>TUESDAYS</b>	8:00 am to 11:00 am
<b>WEDNESDAYS</b>	8:00 am to 11:00 am
<b>THURSDAYS</b>	8:00 am to 11:00 am
<b>FRIDAYS</b>	8:00 am to 11:00 am
<b>SATURDAYS</b>	8:30 am to 11:30 am

**Only \$12 per cubic yard  
A Tarp is Required**



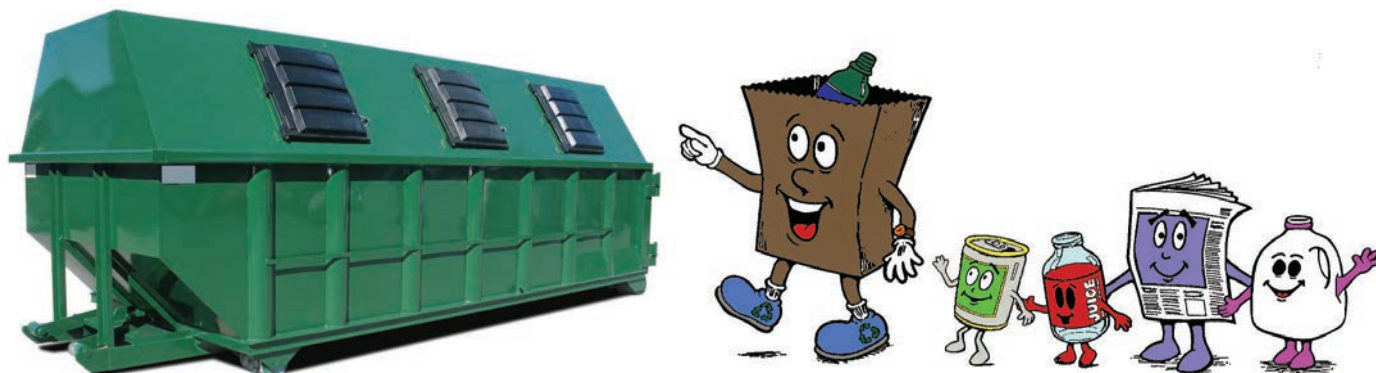
# GLRA's Savings Center is Lebanon County's One-Stop Recycling Drop-Off Center

The Greater Lebanon Refuse Authority (GLRA) hosts a FREE county-wide recycling drop-off center at its facility located at 1610 Russell Road, Lebanon, 17046. GLRA's Savings Center is open to all Lebanon County residents during its normal business hours: Weekdays 7:00 a.m. to 3:50 p.m. and Saturday 8:00 a.m. to 11:45 a.m. GLRA's Savings Center is quick and easy to use with large roll-off containers distinctly labeled for each of the individual materials that are collected. The center is also staffed, so there is always someone there to answer any questions a resident may have.

**It is important to note that all materials are collected separate from each other. There is a bin specifically for each individual item. There is no mixing of materials. If you mix materials in our bins, then you are contaminating our recycling center.**

Listed below are the individual bins for the specific materials accepted at GLRA's Savings Center:

- **#1 PET Plastic Bottles ONLY --- NO #1 CLEAR PET PLASTIC THERMOFORM PACKAGING!**
- **#1 Clear PET Plastic Thermoform Packaging ONLY --- NO #1 PET BOTTLES!**
- **#2 HDPE Frosted Plastic Bottles ONLY**
- **#2 HDPE Colored Plastic Bottles ONLY**
- **Clear Glass Bottles & Jars (Food/Beverage ONLY)**
- **Green Glass Bottles & Jars (Food/Beverage ONLY)**
- **Brown Glass Bottles & Jars (Food/Beverage ONLY)**
- **Aluminum Cans (Food/Beverage ONLY)**
- **Steel Cans (Food/Beverage ONLY)**
- **Corrugated Cardboard (Must Be Flat)**
- **Magazines/Catalogs**
- **Newspaper/Phone Books**
- **Mixed Office Paper/Junk Mail**



## What Do You Think of Our Newsletter?

Please let Lebanon County Recycling Coordinator [Amy Mazzella di Bosco](#) know!  
Give her a call at 717-867-5790 Ext. 307 or send her an email at [info@goglra.org](mailto:info@goglra.org).





## Battery Recycling Program at GLRA

GLRA will accept all rechargeable and single-use batteries for FREE at its Electronics Recycling Facility, located at 1805 Russell Road. GLRA has been approved as a Call2Recycle collection site for both rechargeable and single-use batteries.

**RECHARGEABLE BATTERIES** are commonly found in cordless power tools, cordless phones, laptops, cell-phones, cameras, two-way radios, and medical equipment (portable glucose monitor, thermometer, etc.).

**SINGLE-USE BATTERIES** cannot be recharged and must be disposed of once they wear out. Single-Use batteries are most commonly used in low-drain devices, such as flashlights, clocks, watches, remote controls, smoke detectors, keyless entry remotes, toys, and hearing aids.

**EACH** individual battery **MUST BE** under 11 pounds to be accepted and **EACH** individual battery **MUST BE** placed in an **INDIVIDUAL** clear plastic storage/ziplock bag.

HERE'S WHY... 

Batteries may hold a residual charge even when they appear dead. When this battery comes into contact with other batteries or metal, a spark or heat can occur. Unprotected battery terminals are dangerous. Sparks and heat can cause smoke, fires and explosions resulting in property damage or physical injury.

Bagging is the quickest and easiest way to protect battery terminals. Remember **ONLY ONE** battery per clear storage bag! No matter how tedious that sounds, that is the rule if you want to recycle your batteries for **FREE** at our location. The clear plastic storage/ziplock bags are **PROVIDED** and **AVAILABLE** at the facility.

GLRA has the Call2Recycle Battery Collection Boxes available at the Electronics Recycling Facility for residents to use, as well as the clear plastic storage/ziplock bags for residents to put **ONE BATTERY PER BAG**. There will also be a **LIMIT** of **50 BATTERIES PER VISIT PER CUSTOMER**.

### Rechargeable Batteries

- Small Sealed Lead Acid (SSLA/Pb)
- Nickel Metal Hydride (Ni-MH)
- Nickel Cadmium (Ni-Cd)
- Lithium Ion (Li-Ion)
- Nickel Zinc (Ni-Zn)



### Single-Use Batteries

- Alkaline (AA, AAA, 6V, 9V, C, D, Button Cells)
- Lithium Primary



# Dispose of Your Old Electronics for FREE

The Greater Lebanon Refuse Authority offers year-round FREE electronics recycling to Lebanon County Residents! The facility is located at 1805 Russell Road, in North Lebanon Township, and will accept old televisions, computers, and computer peripherals from Lebanon County residents for FREE! The facility is open weekdays from 8:00 a.m. to 3:30 p.m. and Saturdays from 8:30 a.m. to 11:30 a.m. Please read the list of **ACCEPTABLE** and **UNACCEPTABLE** items provided below.

## **RULES FOR DROPPING OFF ELECTRONICS**

See the **COMPLETE** list of acceptable electronic devices below. If it is **NOT** on the list, then it is **NOT ACCEPTABLE**.

No assistance will be given to unload. You must be able to unload materials safely and properly. If that requires bringing 2 or 3 individuals along to unload an oversized item, then you must do so.

There is no advanced scheduling. GLRA has implemented a **5 PER DAY RULE**. Individual residents, commercial businesses, manufacturers and institutions may bring in up to a **MAXIMUM** of **5** computers and/or televisions **PER DAY**. Truckloads and large quantities are no longer accepted and will be turned away. Everyone is subject to the **5 PER DAY RULE. NO EXCEPTIONS.**

## **ACCEPTABLE ELECTRONIC DEVICES THAT WE TAKE FOR FREE**

- All Computers and PCs (Desktops, Laptops, Notebooks, Tablets, and Servers)
- All Computer Monitors and TVs (CRT, LCD, LED, Plasma, Flat screen, Projection, Console)
- Computer Peripherals: Keyboards, Mice, Computer Speakers, and External Devices  
External Devices include: CD/DVD/Blu-Ray ROM/Burners, Scanners, Wireless Routers/Switches, Modems, and External Tape, Optical, and Hard Disc Drives
- Printers: Desktop Printers, Dot Matrix, Inkjet, Laser, All in Ones (Printer-Scanner-Fax Combos)
- Cell Phones, PDAs, Smart Phones/Watches, Mobile Devices, Hand-held PCs, MP3 Players, Fitbits
- All Electronic Cables and Wiring
- Video Games, Gaming Consoles, and Controllers
- Power Supplies, UPS (Uninterruptible Power Supplies, USB Ports/Drives, Battery Back Ups)

## **UNACCEPTABLE ITEMS THAT SHOULD BE DISPOSED OF IN THE REGULAR TRASH:**

Stereo • Radio • Boom Box • Digital Clock • Copy Machine • Fax Machine • Calculator • Typewriter • CD Player VCR • DVR • DVD Player • Toaster/Toaster Oven • Stereo Speakers • Answering Machine • Sweeper Vacuum • Iron • Smart Board • Hair Dryer • Hand Mixer • Stand Mixer • Blender • Microwave Oven Coffee Maker • Keurig • Small Satellite Dish • Console Stereo • Christmas Tree String Lights





# B O A T Recyclers

If you are looking for a place to dispose of old auto batteries, used motor oil, antifreeze or tires, here's a list of area businesses in Lebanon County that will recycle one or more of these hard to dispose of items. Depending on where you go or depending on the item, a small disposal fee may be required. Please call in advance to inquire about any fees for disposal.

ALL ITEMS MUST BE DROPPED OFF DURING NORMAL BUSINESS HOURS

B = AUTO BATTERIES

O = MOTOR OIL

A = ANTIFREEZE

T = TIRES

## ANNVILLE

Annville Equipment Co. B & O  
470 Palmyra-Bellgrove Rd. 717-867-4631

BHM Farm Equipment Inc. B & O  
683 N. Route 934 717-867-2211

## CLEONA

Henise Tire Service Inc. O & T  
558 E. Penn Ave. 717-272-2102

## LEBANON

Autohaus Lebanon Volkswagen B, O, A  
1250 Chestnut St. 717-500-3520

Advance Auto Parts B, O, A  
801 Bowman St. 717-273-4001

Advance Auto Parts B & O  
1450 Cumberland St. 717-306-4201

Auto Zone B & O  
2515 Cumberland St. 717-274-8994

Auto Zone B & O  
101 N. 11th Ave. 717-228-1900

Bamberger's Inc. B, O, T  
122 Schneider Dr. 717-272-6641

Battery Warehouse B  
125 Schneider Dr. 717-273-8884

Campbell's Service Center B, A, T  
157 N. 9th St. 717-273-4662

CSR-Brandywine B  
328 N. 14th St. 717-272-4655

Diversified Auto & Repair B, O, A, T  
812 Horseshoe Pike 717-867-2221

Firestone Tire & Service B, O, A, T  
1143 Quentin Rd. 717-273-8111

Fox's Transport T  
350 N. 18th St. 717-274-8876

Greater Lebanon Refuse Authority T  
1610 Russell Rd. 717-867-5790

Lebanon Auto Clinic B, O, T  
421 E. Walton St. 717-274-8380

Leffler's Service B, O, A, T  
640 N. 9th St. 717-272-9951

Leiss' Garage B, O, A, T  
1834 Lehman St. 717-274-2027

Market Square Svc Station B & T  
31 N. 9th St. 717-274-9896

Simon S. Kettering & Sons B & T  
1599 Cumberland St. 717-272-5771

Reedy's Diesel Service O  
1730 N. Highway 72 717-273-4747

Snyder's Service B, O, T  
909 N. 7th St. 717-272-2094

Tim Wolfe's Automotive B, O, A, T  
1358 Cumberland St. 717-273-7051

Zimmey's Automotive B, O, A, T  
564 Horseshoe Pike 717-867-1644

## MYERSTOWN

Advance Auto Parts B & O  
119 W. Lincoln Ave. 717-866-5741

## PALMYRA

Advance Auto Parts B, O, A  
700 E. Main St. 717-838-4080

Auto Zone B & O  
1099 E. Main St. 717-832-8102

Dayne's Auto Center B, O, T  
328 E. Main St. 717-838-5321

Klick-Lewis, Inc. B, O, A, T  
720 E. Main St. 717-838-1353

## RICHLAND

Agriteer-Richland B, O, A  
700 E. Linden St. 717-740-5644

The GLRA has prepared this list based on the best information available at the time. The GLRA does not endorse any of the companies listed. Please notify the GLRA of any errors, omissions, or updates.





# CFL Bulb Recycling Drop-Off Locations



**GREATER LEBANON  
REFUSE AUTHORITY**  
1610 Russell Road  
Lebanon, PA 17046  
(717) 867-5790  
8 AM to 3 PM Mon-Fri

**HOME DEPOT #4141**  
801 East Walnut Street  
Lebanon, PA 17042  
(717) 273-4829  
6 AM to 10 PM Mon-Sat  
8 AM to 8 PM Sun

**LOWE'S #0022**  
1755 Quentin Road  
Lebanon, PA 17042  
(717) 228-3300  
6 AM to 10 PM Mon-Sat  
8 AM to 8 PM Sun

**LOWE'S #2584**  
70 North Londonderry Square  
Palmyra, PA 17078  
(717) 473-2030  
6 AM to 10 PM Mon-Sat  
8 AM to 8 PM Sun

**TO PREPARE COMPACT FLUORESCENT LIGHT BULB  
FOR RECYCLING, PLACE CFL IN A ZIPLOCK BAG.**

**LIMIT of up to 10 CFL bulbs per visit per location.**



**FREE  
Thermostat Recycling**

We **ONLY** accept  
old mercury thermostats  
at GLRA's Main Office  
located at 1610 Russell Road.  
Please bring in a ziplock bag.

**call2recycle®**

Leading the charge for recycling.™

[www.call2recycle.org](http://www.call2recycle.org)

**Rechargeable  
Battery Recycling**

**Accepted Rechargeable Battery Chemistries**  
Dry-Cell Batteries up to 11lbs per Battery  
These include **ONLY**:

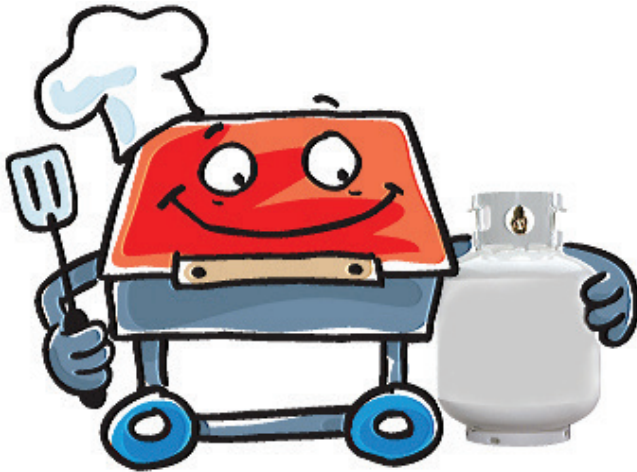
- Nickel Cadmium (Ni-Cd)
- Nickel Metal Hydride (Ni-MH)
- Nickel Zinc (Ni-Zn)
- Lithium Ion (Li-ion)
- Small Sealed Lead (SSLA/Pb)



GLRA	1805 Russell Rd.	Lebanon
Home Depot	801 E. Walnut St.	Lebanon
Lowe's	1755 Quentin Rd.	Lebanon
Lowe's	70 N. Londonderry Sq.	Palmyra
Staples	1820 Quentin Rd.	Lebanon



## FREE Propane Tank Recycling



We accept **OLD EMPTY** propane tanks/cylinders at GLRA's Recycling Center located at 1610 Russell Road. We will **ONLY** accept **EMPTY** propane tanks/cylinders from 1# to 100# pounds.

## Residential Tire Recycling at GLRA

GLRA recycles tires from Lebanon County residents only. There is a limit of up to 10 tires per residential customer. A GLRA license is required. We only accept rubber tires (steel belted or bias). Tires must be off the rim.

### TIRE FEES

BICYCLE	\$ 1.00 each
MOTORCYCLE	\$ 2.00 each
CAR (12" to 17")	\$ 4.00 each
TRUCK (15" to 17")	\$ 6.00 each
TRUCK (18" to 23")	\$12.00 each

All Farm, Tractor & Heavy Equipment Tires will be weighed at 20¢ per pound.



## SHRED THE WORD...

GLRA's Annual FREE Paper Shred Event

Coming sometime July 2024!

**Look for the official date as well as more specific details**

about the event on GLRA's website beginning June 2024!

